

FERRO 77

25.5m (83'6) | Delta Yacht | 2024



BUILDER

Delta

YEAR

2024

LOA

25.5m (83'6)

BEAM

5.9m

DRAFT

3.5m

GUESTS

8

CREW

4

CRUISING SPEED

15 knots

STABILIZERS

At anchor and underway

GROSS TONNAGE

120 GT



ABOUT FERRO 77

Introducing the FERRO 77, a 25.5m motor yacht from Delta Yacht that far exceeds expectations for her size. Built with a sleek aluminium hull and superstructure, she blends striking contemporary design with impressive performance. Powered by three Volvo Penta D13 1050 IPS engines—each delivering 900 hp—she reaches a top speed of 25 knots and cruises comfortably at 15 knots. With a range of up to 800 nautical miles at cruising speed, she's perfectly suited to varied and adventurous itineraries.

FERRO 77 accommodates up to eight guests across five beautifully appointed cabins, including a spacious master suite, a VIP cabin, and three additional guest cabins. Her clever layout, combined with oversized windows, floods the expansive main saloon and living areas with natural light, creating an open and inviting atmosphere.

The interior boasts an elegant open-plan saloon with panoramic views, a fully equipped galley, and stylish, contemporary furnishings throughout. Outside, guests can relax across generous deck spaces ideal for sunbathing or al fresco dining, while the swim platform provides effortless access to the sea.

Whether you're after laid-back luxury or an active escape, the FERRO 77 delivers a superb balance of comfort, style, and performance—making her an excellent choice for your next charter adventure.



ACCOMMODATION

FERRO 77 can sleep up to 8 guests across 4 staterooms.

LOWER DECK:

1 x full-beam master stateroom with a queen size bed (175 x 200cm) which is en suite with a shower

1 x VIP cabin with a queen size bed (175 x 200cm) is en suite with a shower

1 x guest double with with a queen size bed (175 x 200cm) is en suite with a shower

1 x twin stateroom (80 x200cm) which is en suite with a shower

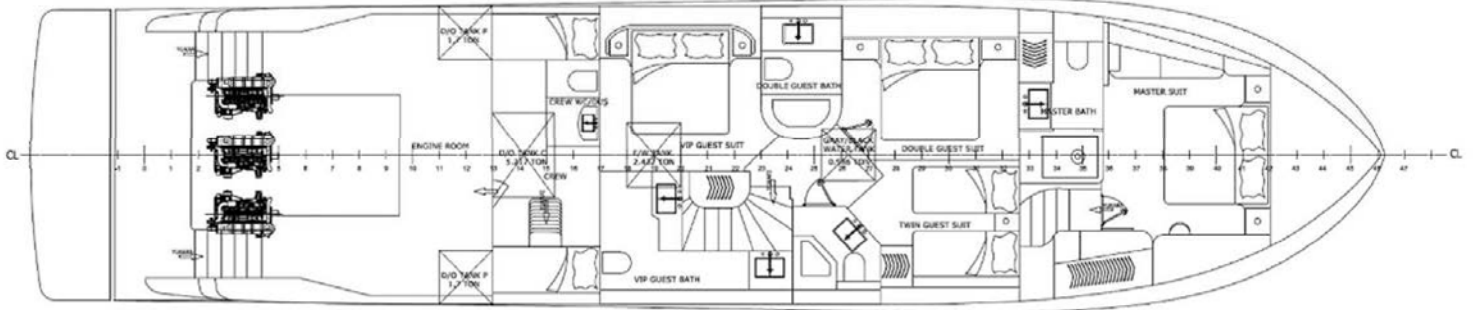
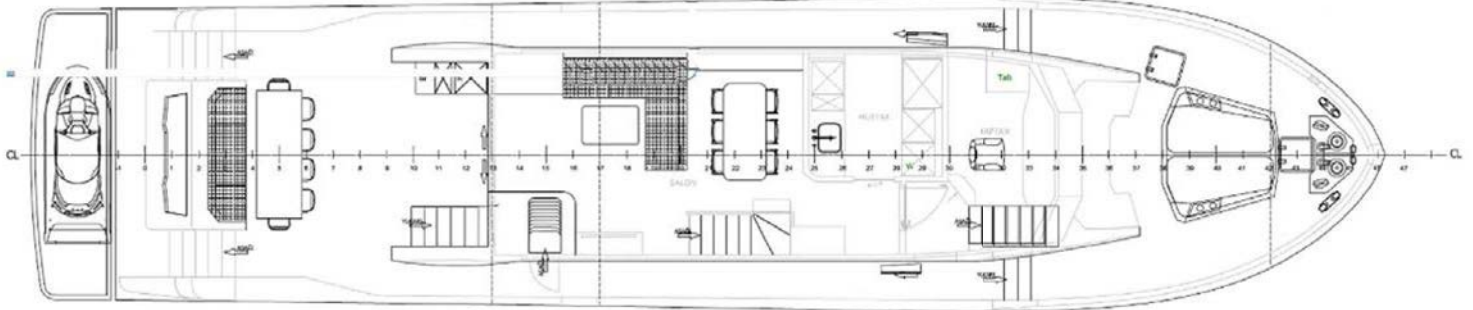
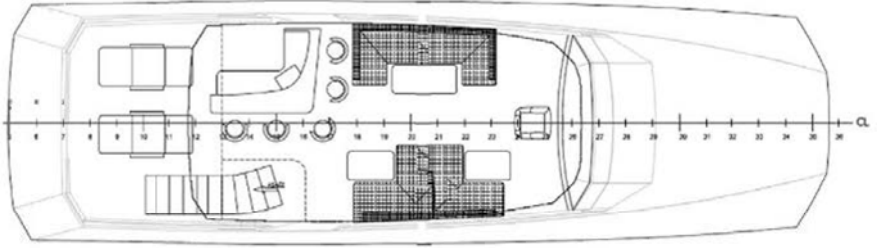
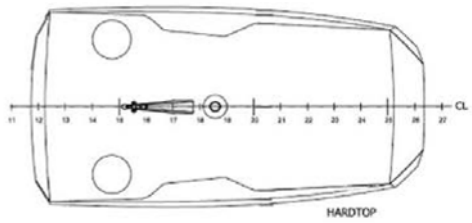




KEY FEATURES

- Contemporary design and sleek lines create a refined aesthetic
- Clever layout and large windows provide abundant natural light and an airy ambience throughout
- 4 luxurious staterooms accommodate up to 8 guests in comfort
- Expansive decks offer generous sunbathing areas, alfresco dining, and a well-appointed flybridge with panoramic views
- Hydraulic swim platform submerges for easy sea access
- Stabilisers fitted for both at-anchor and underway comfort
- Three powerful engines deliver a cruising speed of approx. 15 knots and top speeds of 25 knots
- Luxurious interiors with high-end materials, elegant décor, and a serene, light-filled atmosphere

GENERAL ARRANGEMENT



Profile at anchor



FERRO 77



Underway



Bow



Stern view underway



Aerial view underway



Aerial view



Underway with tender



Underway with tender alongside



Underway with tender





Remote anchorage



Remote anchorage



Remote anchorage



Swim platform with toys out



Swim platform



Submersible hydraulic swim platform



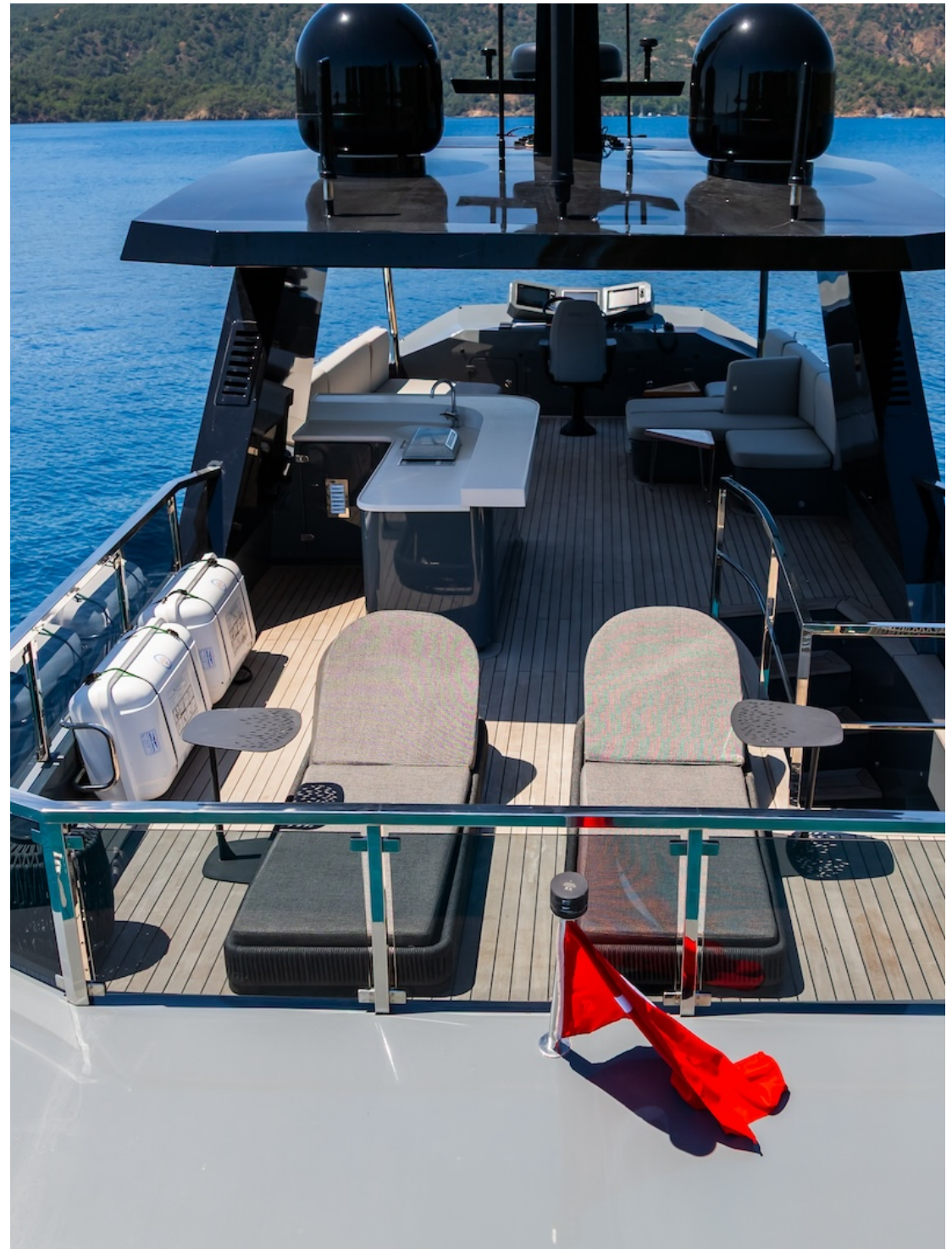
Foredeck seating



Foredeck



Flybridge







Main deck aft



Al fresco dining



Swim platform



Swim platform



Hydraulic swimplatform



Main saloon



Main saloon



Fine dining



Main lounge



Master stateroom



VIP stateroom



VIP stateroom en suite



Twin stateroom



Remote anchorage



LEGAL: We have tried to ensure that the information contained within this presentation is as up-to-date and accurate at the time of preparation. However, this cannot be 100% guaranteed. No part of this presentation may be reproduced.
All rights reserved.